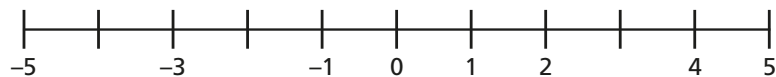


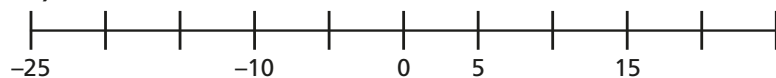


1 Complete the number lines.

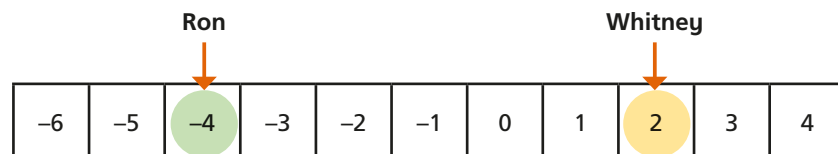
a)



b)



2 Whitney and Ron are playing a game.



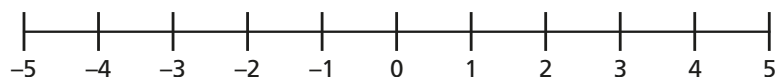
a) Ron moves forwards 5 spaces.

What number is his counter on now?

b) Whitney moves back 7 spaces.

What number is her counter on now?

3 Use the number line to find the difference between the numbers.



a) 3 and 5 b) -3 and 5 c) -1 and 1 d) -5 and 5

4 The temperature on Monday was 4°C .

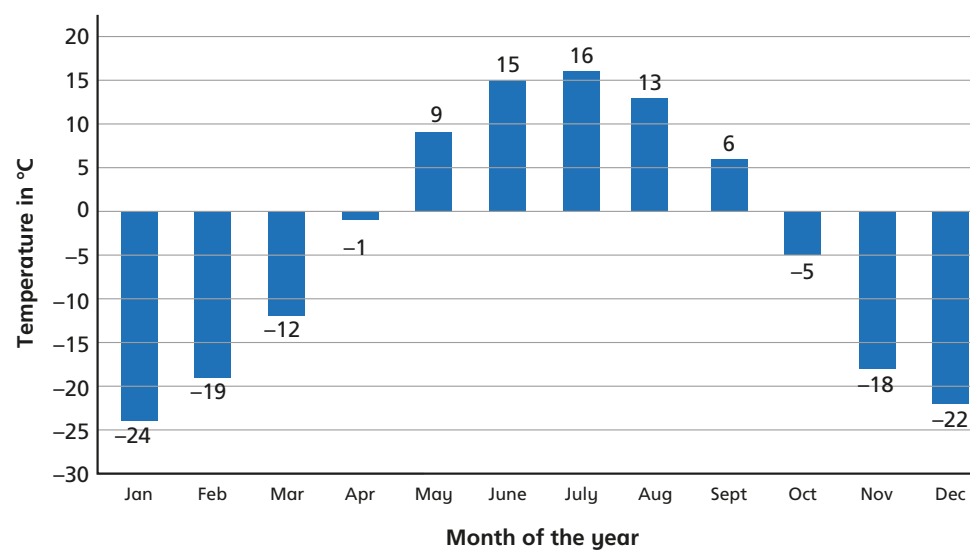
a) That night the temperature fell by 7°C .

What was the temperature at night?

b) On Tuesday the temperature was 13°C .

By how many degrees did the temperature rise from Monday night to Tuesday?

5 This bar chart shows average temperatures for each month at the North Pole.



a) On average, which month is the hottest?

b) On average, which month is the coldest?

c) What is the difference in temperature between the hottest and coldest months?

d) By how many degrees does the temperature rise between March and August?

- 4 The temperature on Monday was 4°C .

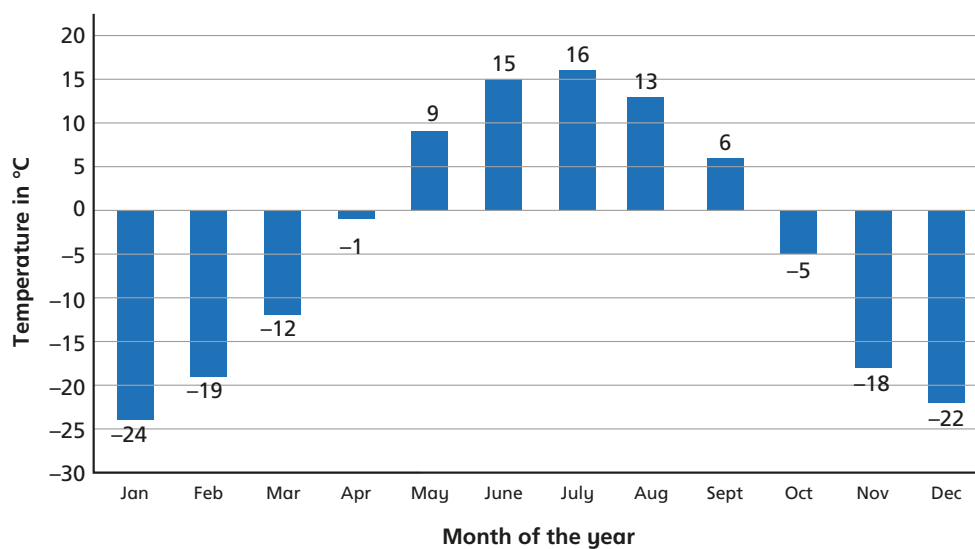
a) That night the temperature fell by 7°C .

What was the temperature at night?

b) On Tuesday the temperature was 13°C .

By how many degrees did the temperature rise from Monday night to Tuesday?

- 5 This bar chart shows average temperatures for each month at the North Pole.



- a) On average, which month is the hottest?
- b) On average, which month is the coldest?
- c) What is the difference in temperature between the hottest and coldest months?
- d) By how many degrees does the temperature rise between March and August?

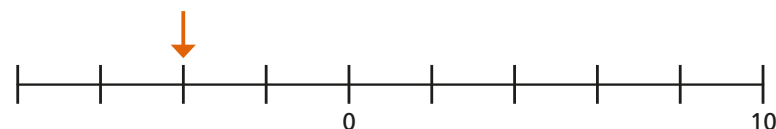
- e) By how many degrees does the temperature fall between June and November?
- f) How many months of the year is the temperature below freezing?
- g) In which months does the average temperature drop below freezing?

- 6 Teddy is on the 4th floor of an office building, which is 14 metres above the ground.

Rosie is in the underground car park, which is 3 metres below the ground.

How far apart are they?

- 7 a) What number is the arrow pointing to?



- b) What number is halfway between C and D?

